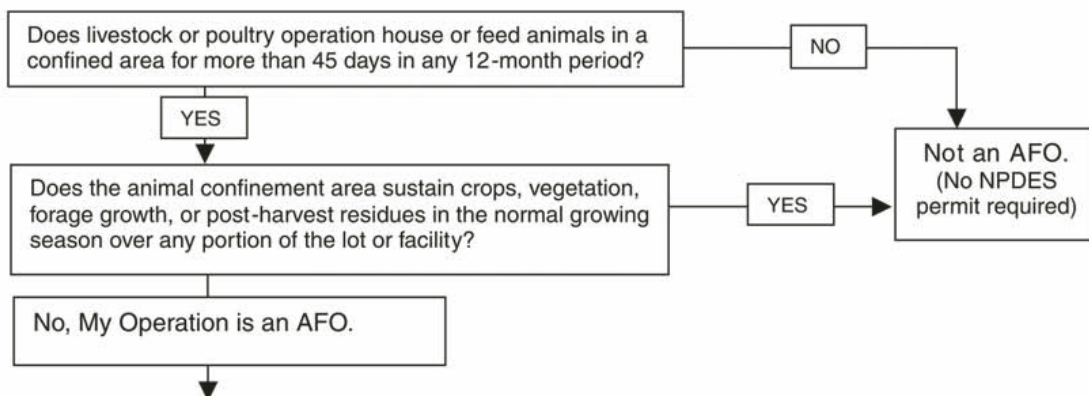


# Am I an AFO or a CAFO?

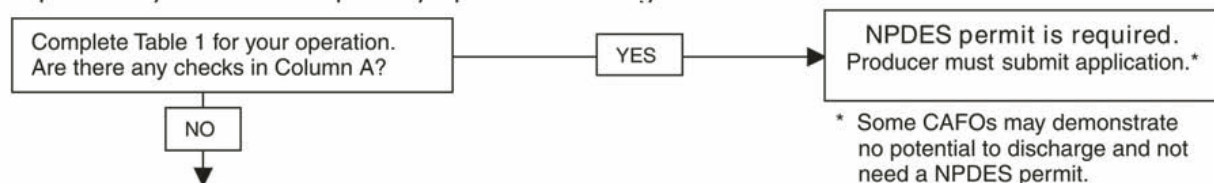
from Koelsch, 2003

[http://www.lpes.org/cafo/02FS\\_Permit.pdf](http://www.lpes.org/cafo/02FS_Permit.pdf)

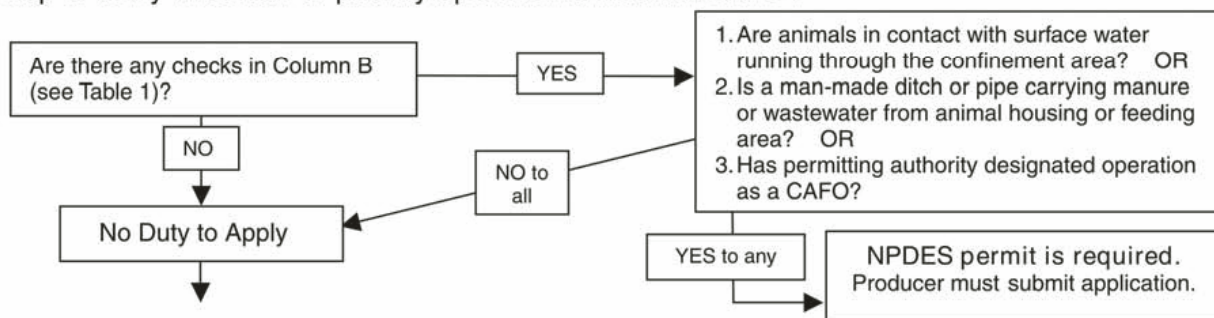
## Step 1. Is my livestock or poultry operation an AFO?



## Step 2. Is my livestock or poultry operation a Large CAFO?



## Step 3. Is my livestock or poultry operation a Medium CAFO?



## Step 4. Is my livestock or poultry operation a Small CAFO? (designated by EPA or permitting authority after inspection)

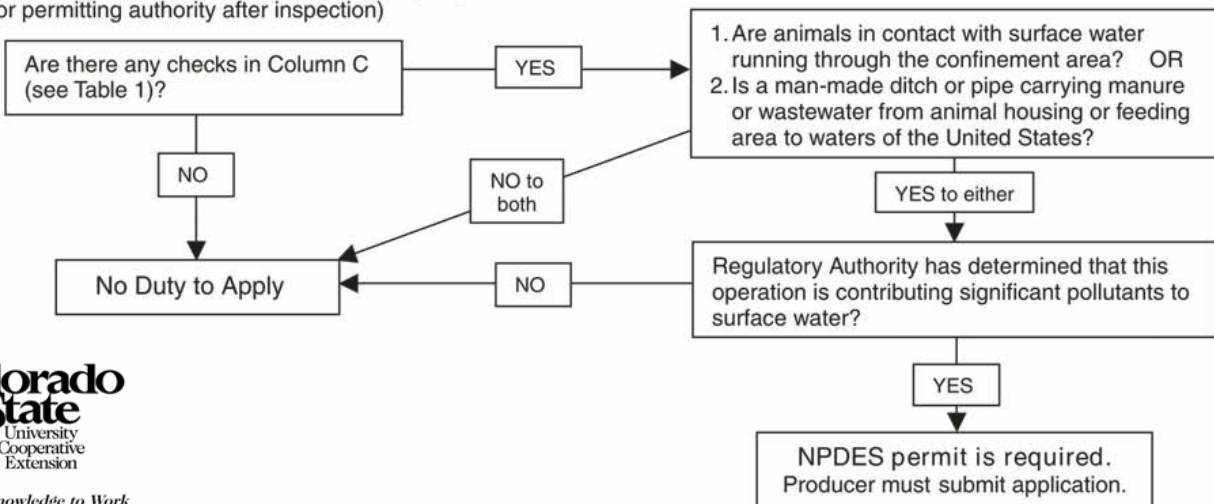


Table 1. AFOs are classified as small medium or large according to the following species animal numbers. Check the number of animals in your AFO.

<u>Species</u>	<u>Column A: Large</u>	<u>Column B: Medium</u>	<u>Column C: Small</u>
Beef cattle	_____ 1,000 or more	_____ 300 to 999	_____ less than 300
Veal	_____ 1,000 or more	_____ 300 to 999	_____ less than 300
Mature dairy cattle	_____ 700 or more	_____ 200to 699	_____ less than 200
Dairy heifers	_____ 1,000 or more	_____ 300 to 999	_____ less than 300
Swine (55 lbs or more)	_____ 2,500 or more	_____ 750 to 2,499	_____ less than 750
Swine (less than 55 lbs)	_____ 10,000 or more	_____ 3,000 to 9,999	_____ less than 3,000
Turkeys	_____ 55,000 or more	_____ 16,500to 54,999	_____ less than 16,500
Laying hens or broilers <sup>1</sup>	_____ 30,000 or more	_____ 9,000 to 29,999	_____ less than 9,000
Laying hens <sup>2</sup>	_____ 82,000 or more	_____ 25,000 to 81,999	_____ less than 25,000
Chickens except laying hens	_____ 125,000or more	_____ 37,500 to 124,999	_____ less than 37,500
Ducks <sup>1</sup>	_____ 5,000 or more	_____ 1,500 to 4,999	_____ less than 1,500
Ducks <sup>2</sup>	_____ 30,000 or more	_____ 10,000 to 29,999	_____ less than 10,000
Sheep or lambs	_____ 10,000 or more	_____ 3,000 to 9,999	_____ less than 3,000
Horses	_____ 500 or more	_____ 150 to 499	_____ less than 150

<sup>1</sup>Only applicable to poultry operations with liquid manure systems

<sup>2</sup>Other than a liquid manure system